

HomeSeer HarmonyHub plug-in version 3.7

Installation.

A prerequisite is that at least one Logitech Harmony Hub must be installed and running:

This plugin is multi instance, so you can add multiple hubs by adding a new instance.

Configuration.

After installation, you need to configure the plug-in and enable one of the Hub configurations. All config options speak for themselves I think.



Harmony Hub Configuration 3-12-2017 10:49:12 Sunrise: 8:29 Sunset: 16:31 User: Admin HomeSeer

HOME VIEW TOOLS PLUG-INS

Harmony Hub Configuration 3-12-2017 10:48:41 Sunrise: 8:29 Sunset: 16:31 User: Admin HomeSeer

General Hub Config

Debug enabled:

Hub Polling Interval (in seconds, less than 60 seconds is experimental):

Save

Home | Device Status | Device Management | Events | Log | Setup | Global Elements | Control Panel | Manage Plug-ins | About

A polling cycle typically takes about 2 seconds to complete

Harmony Hub Configuration 3-12-2017 10:50:57 Sunrise: 8:29 Sunset: 16:31 User: Admin HomeSeer

HOME VIEW TOOLS PLUG-INS

Harmony Hub Configuration 3-12-2017 10:48:41 Sunrise: 8:29 Sunset: 16:31 User: Admin HomeSeer

General Hub Config

Hub enabled:

Hub userid: Rien.duPre@logitech.com (This is the userid you use to login to your MyHarmony account)

Hub password: (This is the password you use to login to your MyHarmony account)

Hub IP address: 192.168.1.33 (This is the IP address of your Hub)

Hub name: TV set (Put here the name your Hub will be known in Homeseer)

Hub room: Room1

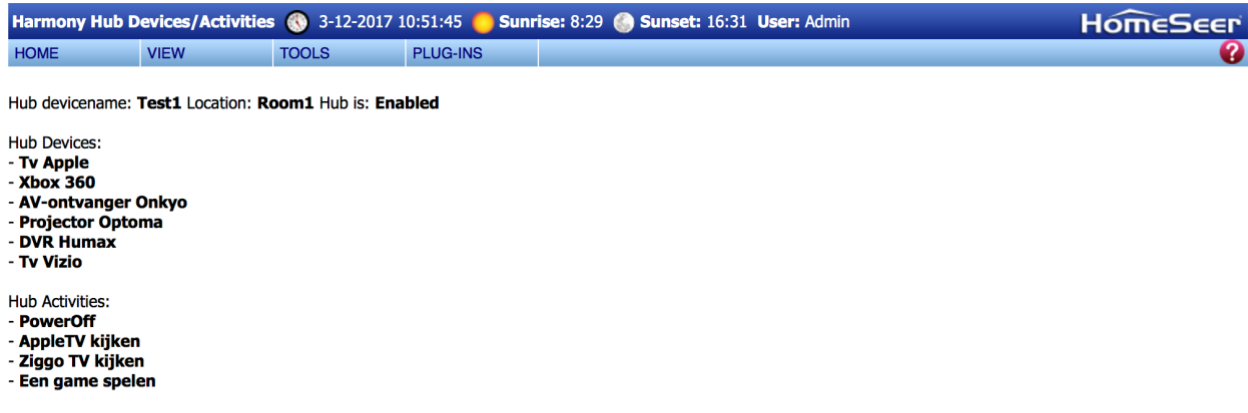
Hub floor: Floor1

Save

Home | Device Status | Device Management | Events | Log | Setup | Global Elements | Control Panel | Manage Plug-ins | About

The Hub userid and password is your MyHarmony account and password. The Hub IP address is the IP address off the Hub itself. Don't forget to save your settings !!! The save is per tab, so you have to save every change, before going to another tab !!!!

After the Hub parameters have been configured go to the Harmony Hub devices and activities page.



The screenshot shows the HomeSeer interface for Harmony Hub Devices/Activities. The top navigation bar includes 'HOME', 'VIEW', 'TOOLS', and 'PLUG-INS'. The main content area displays the following information:

- Hub devicename: **Test1** Location: **Room1** Hub is: **Enabled**
- Hub Devices:
 - **Tv Apple**
 - **Xbox 360**
 - **AV-ontvanger Onkyo**
 - **Projector Optoma**
 - **DVR Humax**
 - **Tv Vizio**
- Hub Activities:
 - **PowerOff**
 - **AppleTV kijken**
 - **Ziggo TV kijken**
 - **Een game spelen**

Below the list are four buttons: 'Create HS Activity device', 'Create HS Hub device(s)', 'Rescan Devices', and 'Rescan Activities'.

Updating the devices and activities can take up to 60 seconds, please be patient.

If you Create the HS devices, only new devices will be created. Existing devices stay intact(you can delete them manually if you want them to be recreated)

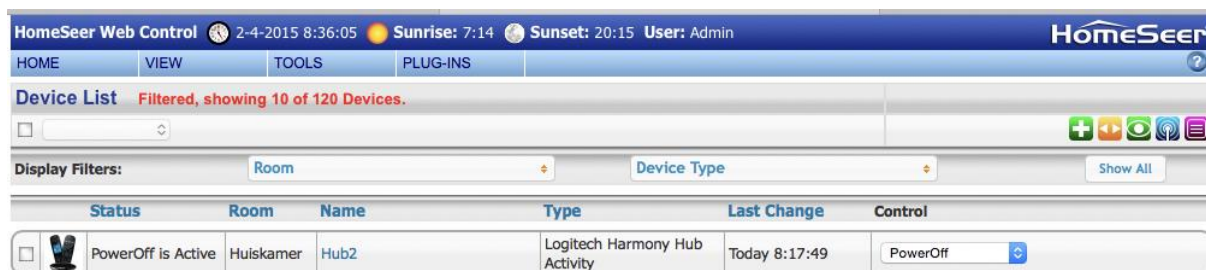
[Home](#) | [Device Status](#) | [Device Management](#) | [Events](#) | [Log](#) | [Setup](#) | [Global Elements](#) | [Control Panel](#) | [Manage Plug-ins](#) | [About](#)

Step 1. Click on Rescan Devices and after about 5-20 seconds the devices you configured with the MyHarmony tool are visible. The Scan also collects all supported IR commands per device and saves this in the configuration file

Step 2. Click on Rescan Activities and the activities you configured with the MyHarmony tool are visible too.



Step 3. Click on Create HS Activity device and a HS device will be created for every Hub you have enabled during the previous step. It creates 1 device per hub

Step 4. Click on Create HS Hub device(s) and a HS device will be created for every Hub device which are available per hub.



The screenshot shows the HomeSeer Device List page. The top navigation bar includes 'HOME', 'VIEW', 'TOOLS', and 'PLUG-INS'. The main content area displays the following information:

- Device List **Filtered, showing 10 of 120 Devices.**
- Display Filters: **Room** (dropdown) | **Device Type** (dropdown) | **Show All** (button)
- Table with columns: **Status**, **Room**, **Name**, **Type**, **Last Change**, **Control**

Status	Room	Name	Type	Last Change	Control
<input type="checkbox"/> 	Huiskamer	Hub2	Logitech Harmony Hub Activity	Today 8:17:49	PowerOff 

HomeSeer Web Control 29-1-2016 10:09:15 Sunrise: 8:27 Sunset: 17:19 User: Admin HomeSeer

HOME VIEW TOOLS PLUG-INS

Device List Filtered, showing 6 of 174 Devices. Sorted by Name, Descending Turn Off Sorting

Display Filters: Floor Room Device Type Show All

Status	Floor	Room	Name	Address	Type	Last Change	Control
<input type="checkbox"/>	Begane grond	Garage	Xbox 360	Hub1	Logitech Harmony Hub Device	Today 7:54:15	PowerOff
<input type="checkbox"/>	Begane grond	Garage	Tv Apple	Hub1	Logitech Harmony Hub Device	Today 7:54:14	DirectionDown
<input type="checkbox"/>	Begane grond	Garage	Projector Optoma	Hub1	Logitech Harmony Hub Device	Today 7:54:15	PowerOff
<input type="checkbox"/>	Begane grond	Garage	Mediaspeler MEDEBER	Hub1	Logitech Harmony Hub Device	Today 7:54:14	PowerToggle
<input type="checkbox"/>	Begane grond	Garage	DVR Humax	Hub1	Logitech Harmony Hub Device	Today 7:54:15	PowerToggle
<input type="checkbox"/>	Begane grond	Garage	AV-ontvanger Onkyo	Hub1	Logitech Harmony Hub Device	Today 7:54:15	PowerOff

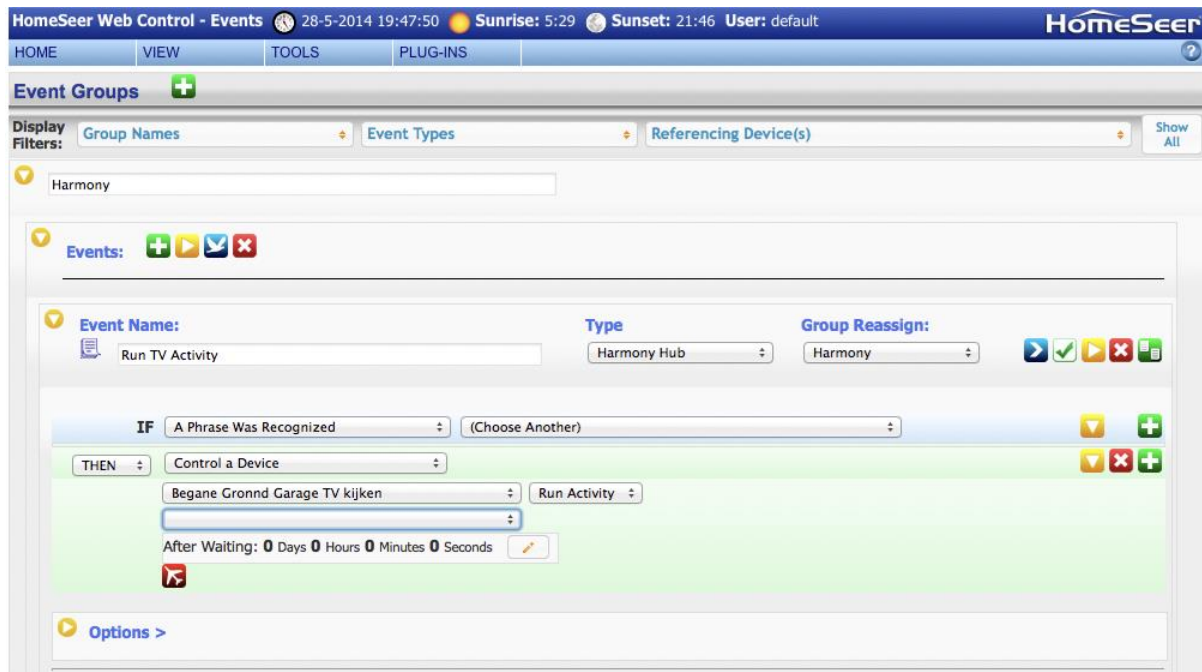
Home | Device Status | Device Management | Events | Log | Setup | Global Elements | Control Panel | Manage Plug-ins | About

If you change, add or remove a hub/device/activity with the MyHarmony tool please repeat step 1 to 4..

You can now choose the activity in the dropdown list and the activity will be started by the Hub. The status is updated every polling interval (as defined in the config). Activities can (of course) also be started by the remote controls and iOS and Android app's, the status of the current activity is reflected regardless which device (or HS itself) has initiated the activity.

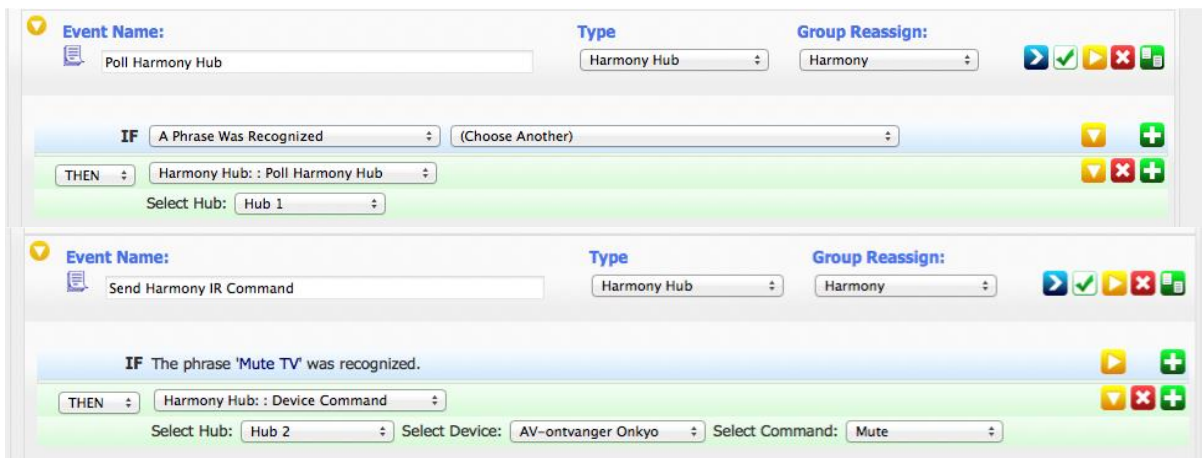
You can also execute an IR command by selecting the command form de Hub devices dropdown list.

It's also easy to create an event and run a Hub activity by using a device control action.



The plug-in has 2 action types you can define.

1. The “PollHarmony Hub” action performs a poll of the Harmony hub apart from the polling which done by the interval defined in the plug-in config. You have to select a hub you wish to poll for.
2. The “Device Command” actions performs an IR command on the selected Hub/Device. You have to choose the Hub first, then select the device and than the IR command you want to issue.



Release history. Version 3.0 → 28 May 2014 (HomeSeer V3 only)

Plug-in version 3.x is tested with Homeseer 3 version 3.0.0.68 and later and Harmony hub firmware 3.7.37 and later

Initial version

- HS3 version plug-in, HS2 is not supported.
- Support for 1 Harmony Hub
- Support for polling action

Still a problem

- none

Version 3.1 → 19 June 2014 (HomeSeer V3 only)

Plug-in version 3.x is tested with Homeseer 3 version 3.0.0.68 and later and Harmony hub firmware 3.7.37

and later

New/changed in this version

- Support for 3 hub's
- Support for IR command action in events
- Much faster response (10x faster)
- Custom activity images now supported
- Password masking enabled
- Password is now encrypted
- Cosmetic changes
- Better Error logging
- Bug fixes

Still a problem

- Error Getting web page from plugin page Harmony Hub:Object reference not set to an instance of an object.àThis error occurs intermittently during a scan of devices.
As far as I can see without any negative side effects.

Version 3.1.5 → 9 November 2014 (HomeSeer V3 only)

Plug-in version 3.x is tested with Homeseer 3 version 3.0.0.68 and later and Harmony hub

firmware 3.7.37 and later

New/changed in this version

- Problem with status of Hub 2 and 3 fixed
- Icons not shown correctly in IE
- Activity devices are now grouped per hub
- Existing activity devices are not deleted anymore when you create devices.
- Minor bug fixes

Still a problem

- Error Getting web page from plugin page Harmony Hub:Object reference not set to an instance of an object.àThis error occurs intermittently during a scan of devices.
As far as I can see without any negative side effects.

Version 3.2 → 2 April 2015 (HomeSeer V3 only)

Plug-in version 3.x is tested with Homeseer 3 version 3.0.0.68 and later and Harmony hub firmware 3.7.37 and later

New/changed in this version

- Added support for in total 5 Hub's
- Simplification of the used devices. Now I only use 1 HS device per Hub, with a dropdown list of the activities.
- Device value support to check for the current activity based on a value.
- Minor bug fixes

Still a problem

- Error Getting web page from plugin page Harmony Hub:Object reference not set to an instance of an object.àThis error occurs intermittently during a scan of devices.
As far as I can see without any negative side effects.

Version 3.3 → 29 January 2016 (HomeSeer V3 only)

Plug-in version 3.x is tested with Homeseer 3 version 3.0.0.68 and later and Harmony hub firmware 3.7.37 and later

New/changed in this version

- Added a HS device per Hub device including related IR commands.

- Added the ability to change your Hub name
- Minor bug fixes

Still a problem

- Error Getting web page from plugin page Harmony Hub:Object reference not set to an instance of an object.àThis error occurs intermittently during a scan of devices.
As far as I can see without any negative side effects.

Version 3.7 → 2 December 2017 (HomeSeer V3 only)

Plug-in version 3.x is tested with Homeseer 3 version 3.0.0.68 and later and Harmony hub firmware 3.7.37 and later

New/changed in this version

- Converted the plugin to a multi instance plugin.
Users of previous version, with more than one hub configured, should add an new instance for their second. third etc.. hub and scan and recreate the devices.
I know this might cause some inconvenience, but there is no other way to keep things clean.
- Added support for devices with the same name per plugin instance.
- Polling cycle can now be set in seconds instead of minutes. Existing users, will have to multiply their polling cycle setting by 60.
Setting the polling cycle lower than 60 seconds is experimental, it might cause performance issues on both the hub and HomeSeer itself.
- Code cleanup and minor bug fixing

Future plans - You tell me.....

Please report all issues with this version to me. Sent an email with the description of the problem to Rien.duPre@me.com Debugging will be much easier and faster if you also can supply me with the homeseer log (with the plug- in debug level on).